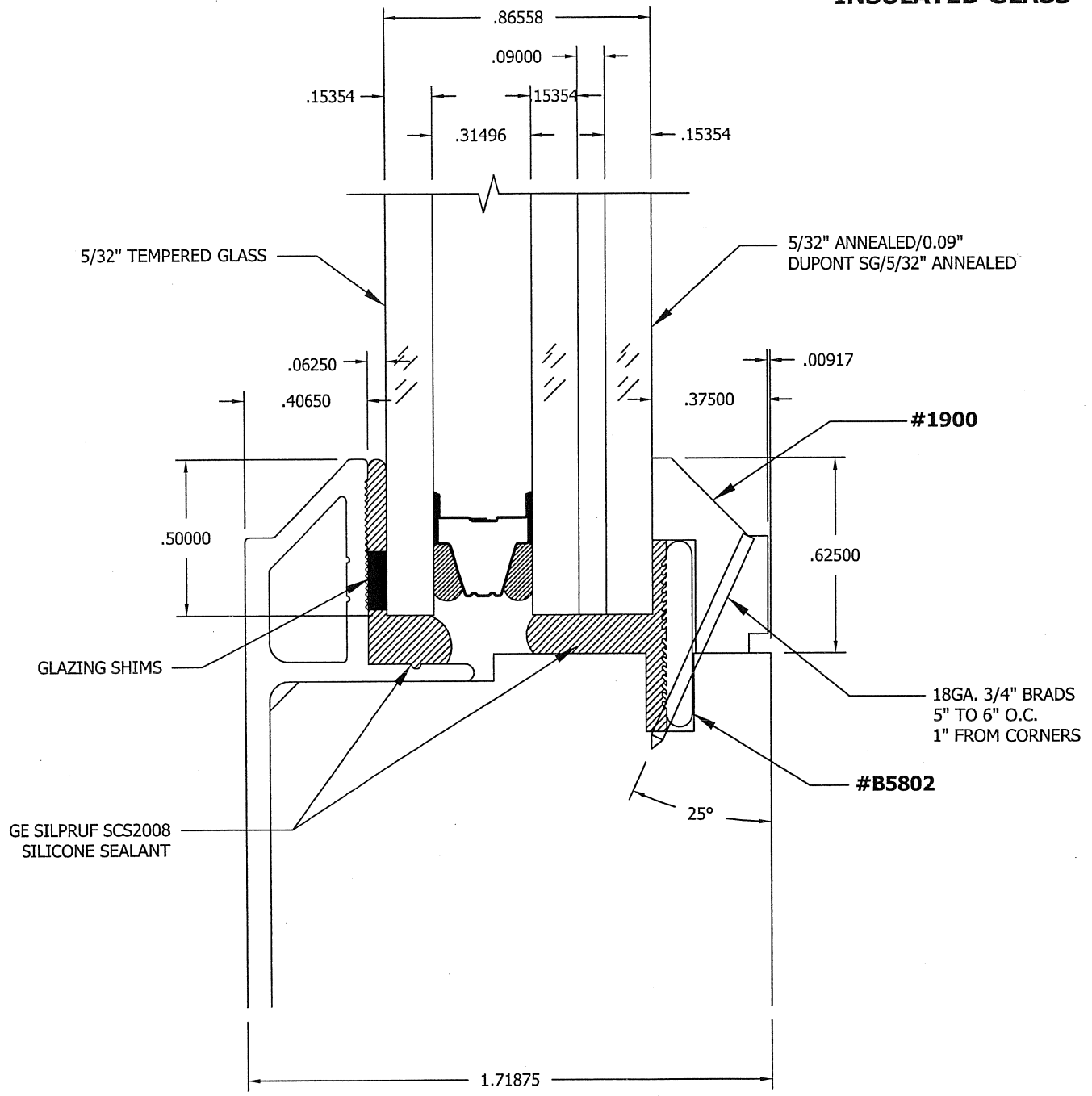


NOTE: UNLESS OTHERWISE SPECIFIED ALL DIMENSIONS ARE GIVEN IN INCHES AND ALL TOLERANCES ARE:  
 DECIMALS ± .005, ANGLES ± 1/2°, FRACTIONS ± 1/64"

**LAMI #27**

**IPD4  
 INSULATED GLASS**



**ULTRA FOLDING DOOR  
 7/8" THICK LAMINATED INSULATED IMPACT GLASS**

DCN -		CREATOR -		SHEET NO. - 1 OF 1		REPLACES -	
REV -	PCR - 3180	DATE - 2/7/14	REV. BY - AHS	TITLE - GLAZING DETAILS - IMPACT SASH - IPD4 INSULATED GLAZED GLASS			
COMMENTS -				PRODUCT - FOLDING DOOR (FLDW)			